

FOR LEASE

Retail/Office Suites in Solvang

LENA BERCH
O: 805.688.5333 / C: 805.680.2279
Lena@BattagliaRE.com
CA DRE #00864783



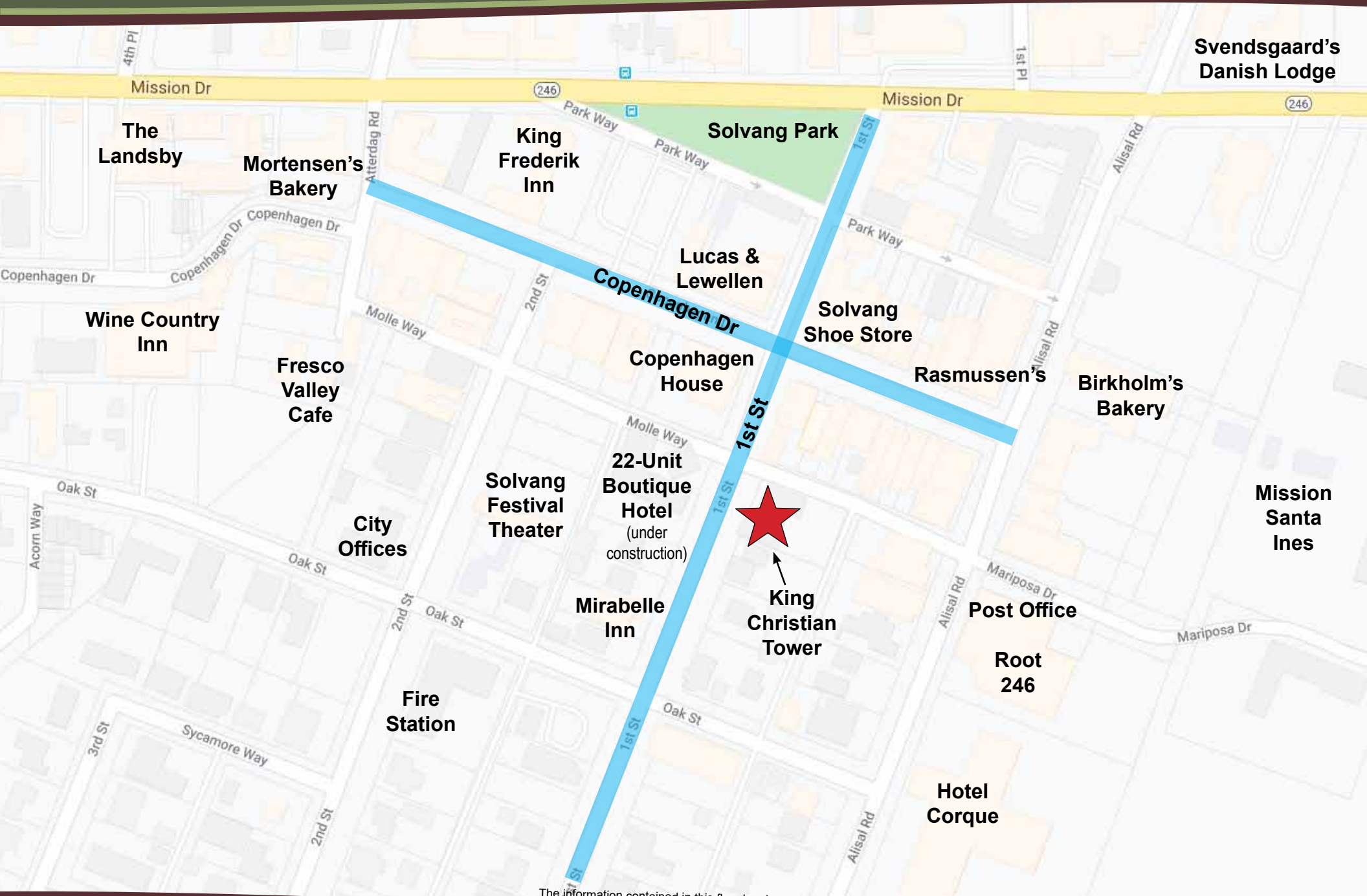
Suite Size: ±375 - 1,220 SF
Lease Rate: Varies, see List
Lease Type: Gross
Lease Term: 1 Year
Restroom: Common Area
Zoning: TRC

436 ^{1st St} SOLVANG, CA

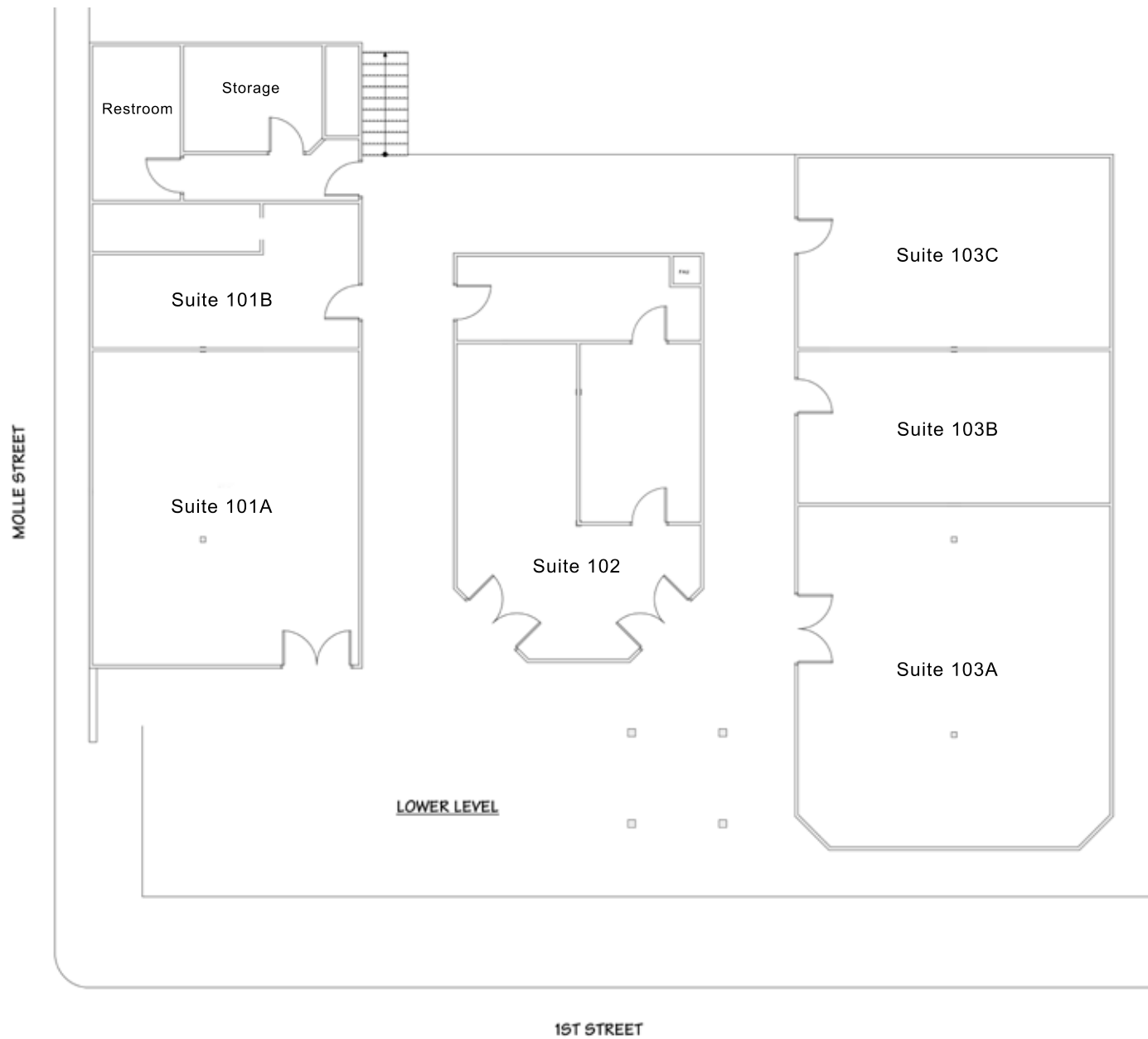
King Christian Tower is a charming office building located in the downtown corridor of the historic Danish town of Solvang, less than a block off of Copenhagen Dr. Many suites have windows, providing ample natural light. Building provides flexible suite sizes from 375 SF to 1,220 SF.

There is offstreet parking in the rear accessible to both first and second floor suites as well as street parking in the front.

The building was built in 1986 and designed by Ferdinand Sorenson, who is known as the Father of Solvang's Danish Architecture.



The information contained in this flyer has been obtained from sources believed reliable. While we do not doubt its accuracy, we do not guarantee it.



Not to Scale

The information contained in this flyer has been obtained from sources believed reliable. While we do not doubt its accuracy, we do not guarantee it.