

# FOR LEASE

## Flexible Office Suites in Downtown Solvang

**LENA BERCH**  
O: 805.688.5333 / C: 805.680.2279  
Lena@BattagliaRE.com  
CA DRE #00864783

# 423 2nd St SOLVANG, CA



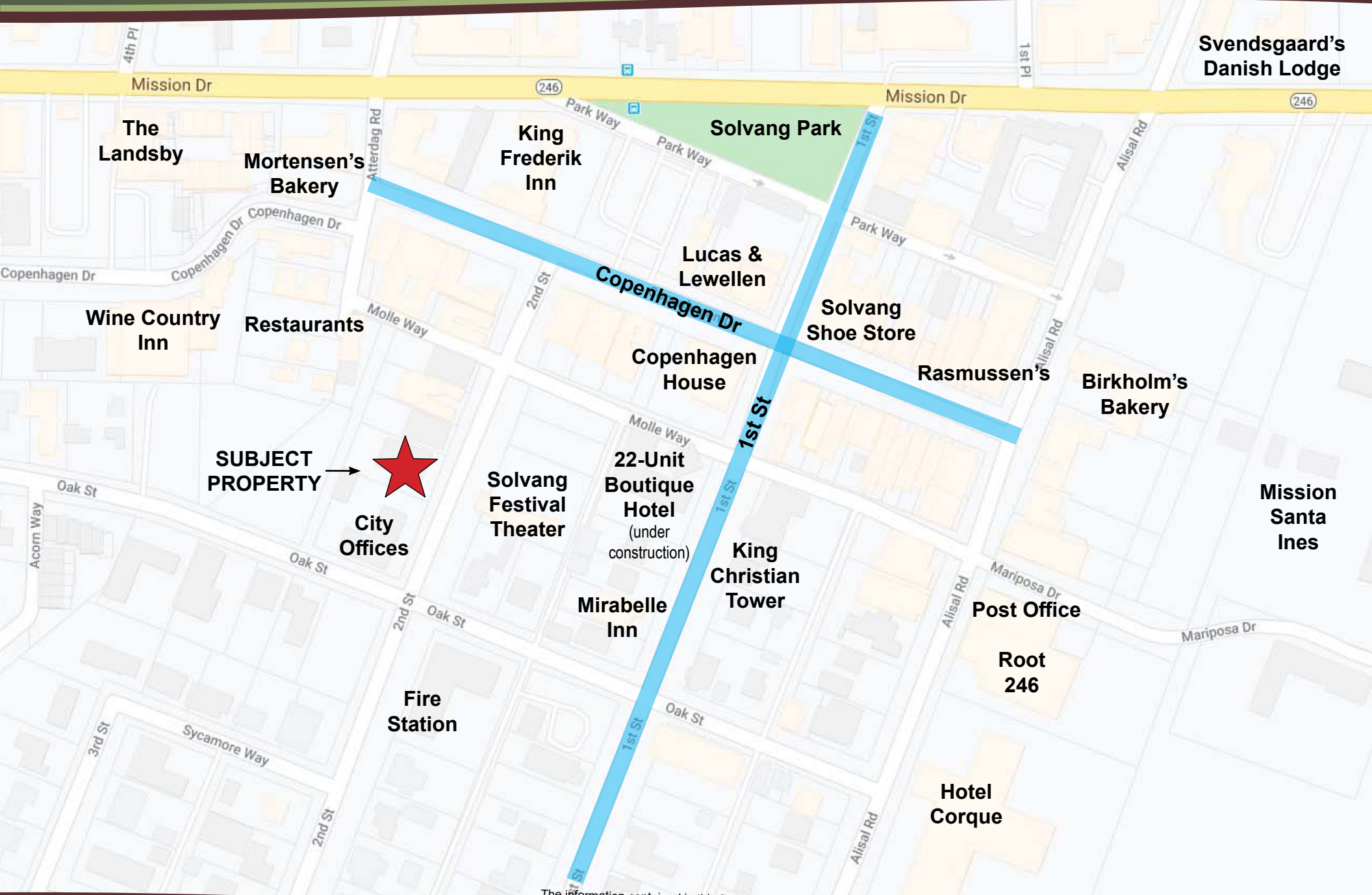
Suite Size:  $\pm$ 130 - 1,050 SF  
Lease Rate: Varies, see List  
Lease Type: Gross  
Lease Term: 2-5 Years  
Restroom: Common Area  
Zoning: TRC

Historic building under renovation and now available for lease in downtown Solvang. Conveniently located across from Solvang Festival Theater and close to the restaurants, wine tasting, and all that downtown Solvang has to offer.

Suites range from smaller offices starting at  $\pm$ 130 SF to larger commercial space up to  $\pm$ 1,900 SF. Most suites have large windows, which provide lots of natural light.

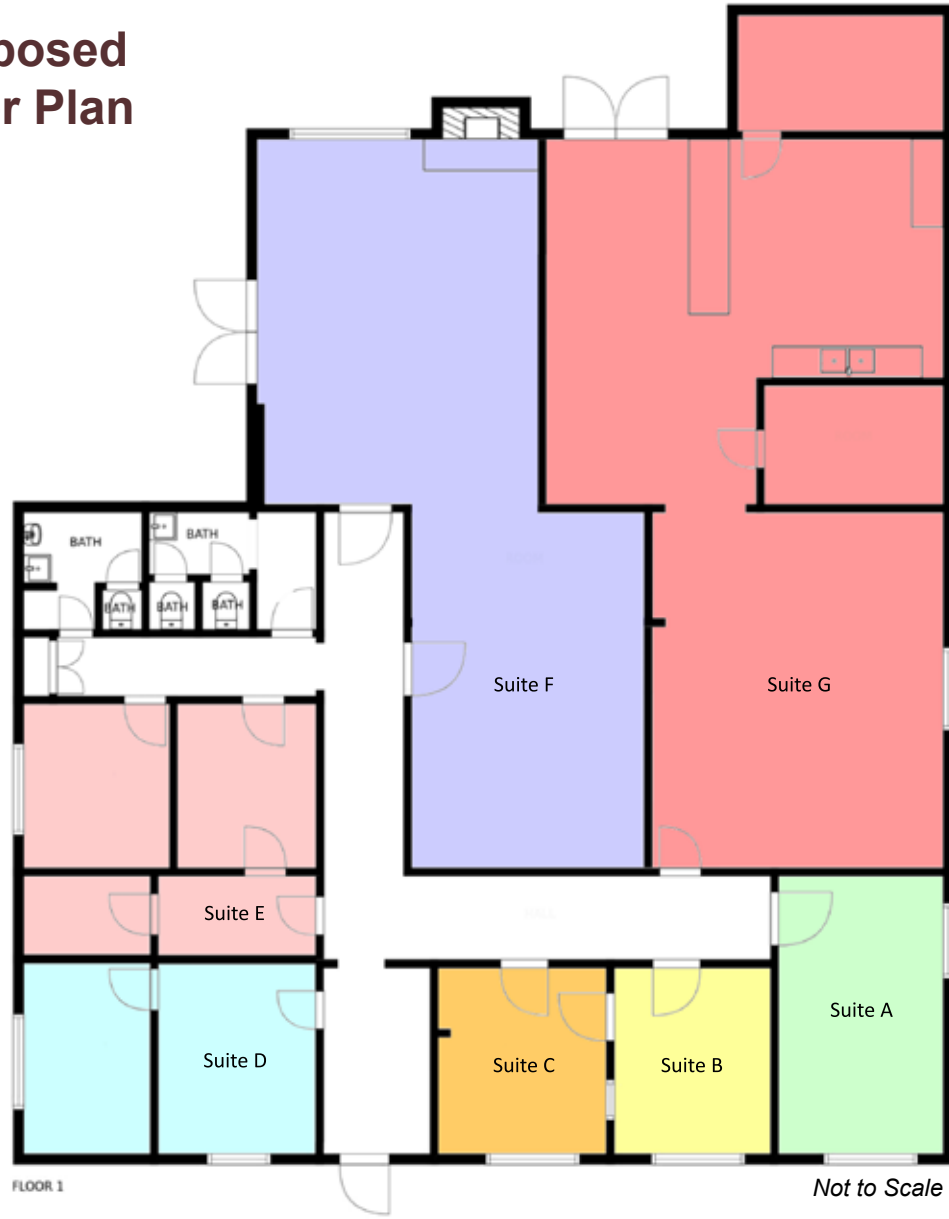
This building was originally built as the home of the local American Legion Post then was home to the Santa Ynez Valley News for decades. It is now under renovation by a new owner and ready to be the future home of your business.

Lots of off-street parking in the rear as well as street parking in the front. TRC zoning allows for a variety of retail, office and service uses.



The information contained in this flyer has been obtained from sources believed reliable. While we do not doubt its accuracy, we do not guarantee it.

## Proposed Floor Plan



The information contained in this flyer has been obtained from sources believed reliable. While we do not doubt its accuracy, we do not guarantee it.